



Draft version

Wirral Council

Department of Regeneration

Parks and Countryside Service

Harrison Park

Management Plan

&

Security Audit

2007 – 2012



Contents

- 1) Introduction and vision
- 2) The wider policy context
- 3) Site information
- 4) Analysis and assessment including Security Audit
- 5) Aims and objectives
- 6) Action plan and security improvement plan
- 7) Monitoring and review
- 8) Appendix

1) Introduction

Wirral Council produced this management plan in conjunction with the Friends of Harrison Park. The plan is intended to provide a framework for the development and improvement of the park over the next five-year period up to 2012. The plan is a working document, which is open to new ideas at any time. We welcome your suggestions and comments for incorporation into this plan, whether you are a local resident, user or organisation. This will help us develop a park that meets everyone's needs and aspirations.

If you wish to find out further information about this document, submit any suggestions or are interested in joining the Friends of Harrison Park please contact **Peter Whittle** in the Parks and Countryside Service at Wirral Council on 0151 666 4713 or by email at peterwhittle@wirral.gov.uk alternatively, you can contact Peter Whittle by writing to:

Parks & Countryside Service, Wirral Council, Westminster House, Hamilton Street, Birkenhead, Wirral, CH41 5FN.

Departmental Mission Statement:

'Promoting a healthy, safer lifestyle and improving the quality of life for all'.

Aims:

- *To enable sustainable, economic, social, neighbourhood and environmental regeneration*
- *To improve the health and well being of Wirral residents*
- *To promote opportunities for personal, community and business development*

Vision

To be agreed in conjunction with the Friends of Harrison Park and stakeholders

2) The wider policy context and its relevance to the park

Wirral Council has produced 9 corporate objectives:

- PROTECTING AND IMPROVING OUR ENVIRONMENT
- PROMOTING AND SUPPORTING THE ECONOMIC REGENERATION OF WIRRAL
- PROVIDING EDUCATIONAL AND CULTURAL OPPORTUNITIES FOR ALL
- IMPROVING THE HEALTH OF WIRRAL PEOPLE
- MAKING WIRRAL SAFER

- MEETING THE HOUSING NEEDS OF WIRRAL
- SUPPORTING AND PROTECTING VULNERABLE PEOPLE
- IMPROVING TRANSPORT
- CONTINUOUSLY IMPROVING SERVICES

The **Parks and Countryside Service Plan 2007/08** sets out the targets for the Service within the context of the above corporate objectives and the **Regeneration Departmental Service Plan for 2007/08**.

The Government views playing field strategies as an essential element underpinning its strategy for the protection and provision of outdoor playing space. In its strategy for sport, 'A Sporting Future for All' (1999), it highlights the need for, and importance of, local authorities carrying out playing pitch assessments.

In line with the above Wirral Council commissioned a '**Playing Pitch Assessment**' in February 2004, the report considered the supply and demand issues for playing pitches and ancillary facilities in the Borough.

3) Site information

Name: Harrison Park

Grid Reference: 329232, 393262

Primary classification: Local Park

Ward: Wallasey

Address: Harrison Drive, Wallasey Village, Wirral, Merseyside

The Park is situated within the 'North' operational district of Wirral Council's Parks and Countryside section, the area base is located in Central Park, Liscard Road, Wallasey tel. No. 652 5608. The Area Park Manager and Assistant Park Manager are responsible for the management of the park.

Size: 8.9 Hectares

Current facilities and features:

- Children's play area
- Six tennis courts
- Three bowling greens and two pavilions
- Two senior size football pitches (one fenced) and changing facilities
- Feature dune mounding with elevated footpath with view points and seating
- Car parking
- Restored ornamental feature drinking fountain

- Bench seating and litter bins
- Border of ornamental bedding
- 'Harrison Park' signs located at the two main entrance points
- Multi-use games area

Tenure:

The site is owned and managed by the Parks and Countryside Service of Wirral Council's Department of Regeneration.

Summary of main uses:

The park is used by the local community for a mixture of both passive and active recreational purpose, including:

- Informal use for ball games
- Dog walking
- For unstructured children's play
- An area to sit and relax, read, eat
- As through access to a connecting route
- As a place for young people to meet and gather
- Organised league and competition bowls
- Local league football
- Tennis

Partner organisations

The Friends of Harrison Park
 Wallasey Village Community Partnership
 Wirral Council Community Safety team
 Football Teams
 Bowls Clubs

Access

The park has three entrance points, which are located on Sandcliffe Road and Harrison Drive respectively. These entrances provide access for wheelchair users. The main vehicle entrance is located on Harrison Drive and accesses a car park adjacent to the Birkenhead to New Brighton railway line.

The children's play area is enclosed and has a self-closing gate.

Pathways are a suitable width and gradient for wheelchair use.

A regular bus service is operates and a stop is situated on Harrison Drive approximately 500m distance from the park.

Wallasey Grove Road rail station is situated in close proximity to the park's Harrison Drive entrance.

A finger post is situated in Wallasey Village at the junction of Grove Road indicating the direction and distance (150yds) to the park.

History

“Almost an Island” The Story of Wallasey by Noel Smith 1990 states:

“The park was presented to the Town in 1896 by the Harrison family, in memory of their parents”.

The following extract is found in the “Guide to New Brighton” 1913

“The Harrison Park (named after generous donors) consists to a large extent of virgin sand dunes, clothed with Stargrass, Wild Thyme, Hare Bells, the low growing exquisitely scented Burnet Rose, and the sea Buckthorn. Forty years ago the grass of Parnassus used to grow abundantly hereabouts, but the combined effects of a volunteer rifle range and more recently the golfing habit, have effectively stamped out this beautiful little wilding. The sandhills are still the breeding places of many rare beetles, moths and butterflies, but the modern rage for specimens has sadly thinned the list. The Skylark, Linnet, Thrush, Cuckoo and other birds frequent the dunes in large numbers in search of food. On the western boundary of the park a considerable area has been levelled, with the object of making it suitable eventually for Cricket, football etc. Reference is made elsewhere to the two admirable bowling greens, which have been laid out on the southwestern boundary, approached from Harrison Drive. The Poulton tramcar passes the Grove Road end of this drive; a few minutes walk from the principal entrance to the park, which is an ideal place for a ramble with children, or a restful lounge for adults, the ozone-laden air being wonderfully restorative”.

“Some aspects of Wallasey growth” – Travers 1924 states:

“Harrison Park, where also bowling greens and hard tennis courts exist, as well as a cricket pitch, with pavilion, was developed a dozen years ago when about £4,000 was spent chiefly in levelling, constructing paths, and soiling loose and shifty sand hills”.

New Brighton Cricket Club played on the park’s cricket square until the 1990’s.

Resources

- The park has a dedicated site based Greenkeeper/Gardener
- A playground safety inspection team visits the park weekly to inspect and service the play equipment.
- A tractor visits the park to perform large are grass cutting.
- Grounds maintenance is funded from the annual maintenance revenue budget
- A range of grounds maintenance machinery
- A Big Lottery Grant of £80K was awarded to the park in 2005 for the purpose of providing youth orientated facilities

Summary of the known problems

1. Occasional vandalism/graffiti and abuse of the park caused by teenage youths who drink alcohol and behave in an ant- social manner causing noise which results in disturbance to neighbouring residents
2. The children's play area requires upgrading/refurbishment to offer a greater play interest for a wider age range
3. The Breedon Gravel footpath traversing the sand dunes will require refurbishment
4. Need to increase community involvement
5. Obsolete unused former tennis pavilion
6. Dog fouling
7. Lack of provision for young people
8. Poor visual impact made by the football changing facility
9. Deteriorating condition of tubular barrier rail spectator fencing surrounding the soccer pitch

Staff and their functions – The Park has a permanent site based Green keeper/Gardener who maintains the park's 3 bowling greens and undertakes grounds maintenance duties within the park. Volume grass cutting is undertaken by visiting tractor-mounted machinery. A separate tree team carries out work across the district including Harrison Park.

The Area Parks Manager is responsible for the management of the site.

A playground inspection team visits the park to undertake a weekly safety inspection (Monday – Friday) of the children's play area.

Skill gaps – The **Parks and Countryside Strategy Plan 2007/08** recognises that a skill gap currently exists within the division's operational staffing, in consequence three main aims have been identified in order to address the issue:

- 1) Review Parks Modern apprentice scheme
- 2) Produce a staff training action plan
- 3) Improve training for parks staff in biodiversity awareness

Stakeholders

- The Friends of Harrison Park
- The Park's Football Clubs
- The Park's Bowling Clubs

What standards are management trying to achieve?

The park is aspiring to achieve the standard as defined by the Green Flag Award Scheme.

What are the current aims and objectives, what level of success has been achieved, and how is this measured?

During 2005 the Park was awarded £80K from The Big Lottery fund; the grant has been used for play provision, a Multi use games area (MUGA) was constructed in the park during May/June 2006.

The Park benefited from funding via the New Wallasey Single Regeneration Budget during 2003. This funding was achieved due, not in small part to the efforts and enthusiasm of the park's stakeholders and in particular members of the Harrison Park Men's Bowling Club, the funding enabled the following improvements to be undertaken in the park:

- ❖ Demolition of bowls pavilion and construction of a new facility
- ❖ Provision of elevated footpath over the dune mounds with view points and associated seating
- ❖ New bench seating and litter bins throughout the park
- ❖ Restoration of the drinking fountain with new cast decorative figure and ornamental seat with associated planting
- ❖ Introduction of tree and shrub planting
- ❖ Ramped gravel access points for wheelchair users from the raised car park area
- ❖ Surface treatment to tennis courts
- ❖ Surface improvement to the car park area
- ❖ Replacement of perimeter fencing

Are there any existing partnerships?

- ✓ The Friends of Harrison Park
- ✓ The Wallasey Village Community Partnership

4) Analysis and assessment

As with many parks across the country, a decline in government investment in green space over previous decades has seen maintenance standards and the condition of facilities within the park decline.

The current condition of the Park has been assessed using the following criteria as defined by the Civic Trust's Green Flag Award scheme:

- 1) A welcoming park
- 2) Healthy, safe and secure
- 3) Clean and maintained
- 4) Sustainability
- 5) Conservation and heritage
- 6) Community involvement
- 7) Marketing
- 8) Management

1) A welcoming park

Harrison Drive, vehicle entrance and car park area – The entrance is inconspicuous and restricted in width.

The embankments either side of the entrance present an untidy appearance colonised by rank weed growth such as nettle, ragwort, Great dock etc the only sign evident is a 'clean it up' dog sign attached to a timber post.

The car park - The surfacing has been laid in two halves of unmatching Bitumen Macadam. There is no definition to the edge of the parking area at the top of the embankment, vehicle-parking bays are not marked on the surface, and dedicated parking bays have not been provided for disabled visitors

The pedestrian entrance situated on Harrison Drive - presents an appealing view of the restored ornamental drinking fountain and adjacent border of annual bedding viewed from the entrance gate through an avenue of young evergreen oak trees. A large attractive sign is situated at the entrance

Sandcliffe Road entrance – A large attractive sign is in place adjacent to the entrance. Perimeter fencing distinguishes the park's boundary.



The waste bins at this entrance are un-matching; the base of a drainage vent pipe is unpainted and the two prohibitive notices look scruffy attached to a timber post.

General

The football changing facility is of a low build quality and contributes negatively to the appearance of the park. Graffiti is evident to all four elevations and the water storage surround on the buildings roof.



The Park currently does not provide a facility for positive youth activity such as a multi-use games area or kick-about court.

2) Healthy, Safe and Secure

The park is covered under the Fouling of Land Act 1996; this act makes it an offence not to clean up in a public area if a dog under your control does foul. Powers to enforce £50 fixed penalty notices on offenders were extended to include Wirral's Community Patrol Officers in August 2007, a media campaign 'Don't give a dog a bad name' will be launched to highlight the new powers.

Wirral Council's policy regarding dog fouling is to encourage responsibility in dog ownership and owners are expected to clean up after their pets, dedicated dog waste bins are not provided; dog waste can be deposited into the Borough's litterbins consequently becoming incorporated with general waste this does not then entail the problems associated with disposal of faeces only bins.

The Park is designated a 'canine faeces removal area'; however dog fouling was apparent throughout the park, signs are in place at entrance points indicating the park is a 'clean it up' area. Many dog walkers use the park's litterbins for the disposal of removed faeces.

Wirral Council operates a 24 hour Community Patrol force, established to provide a response to any concern notified to them regarding anti-social behaviour occurring within Council owned land. The Patrol can be contacted on telephone number 666 5265

Parks and Countryside are represented on the Junior Joint Agency Group (JAG), a forum consisting of the following agencies Merseyside Police, Community Safety, Youth and Community. Serious issues regarding security in parks are raised at the meeting with the intention of providing a multi agency approach to addressing any problems.

The park is covered by Byelaws, made under Section 164 of the Public Health Act, 1875,

It is proposed to introduce an annual site Safety Inspection Checklist; the inspection is intended to identify defects within sites that present a safety problem for staff, users and adjacent residents. The checklist requires the appraisal of the following items:

1. Paths, steps, ramps
2. Walls, fences, gates
3. Buildings
4. Furniture – signs, seats, litterbins etc
5. Soft landscape – grass, planted areas, water features etc
6. Trees

A Security Audit has been undertaken that assessed the park under the following 11 criteria:

- i. Assessment of all entrance points
- ii. Sight-line visibility
- iii. What evidence is apparent of anti-social behaviour or undesirable activity in the park?
- iv. Vandalism
- v. Motor vehicles
- vi. The park at night
- vii. Pathways, pedestrian routes
- viii. Boundaries
- ix. Buildings
- x. Children's play areas
- xi. Is the park well cared for?

The Park is designated a 'canine faeces removal area'; however dog fouling was evident in the park, signs are in place at entrance points indicating the park is a 'clean it up' area. The majority of dog walkers use the park's litterbins for the disposal of removed faeces.

Wirral Council operate a 24 hour Community Patrol force, established to provide a response to any concern notified to them regarding anti-social behaviour occurring within Council owned land. The Patrol can be contacted on telephone number 666 5265

i) Assessment of entrance points

The two gravel surfaced access ramps which lead from the car park to the playing field, intended for wheelchair users, are poorly surfaced and do not have handrails. A boulder is placed at the top of the ramps to deter vehicle access to the playing field.



The pedestrian entrances from both Harrison Drive have park signs with contact information, prohibitive signs relating to golf and dog fouling are in place adjacent to these entry points however these are damaged or defaced.

ii) Sight-line visibility

The car park entrance situated on Harrison Drive does not provide good visibility for vehicles either entering or exiting the park. On exit visibility is restricted due to the bend in the road as it crosses the bridge over the railway track. Due to the restriction in width of the entrance vehicles turning left on exit are required to extend into the oncoming lane.

Good visibility for users is provided throughout the park, by it's nature the park does not contain areas of shrub planting.

iii) What evidence is apparent of anti-social behaviour or undesirable activity in the park?

Some undesirable and anti-social activity is occurring in the park, evidenced by the graffiti and debris at the rear of the football pavilion. See Security Audit. A storage container, situated adjacent to the building, provides access to the pavilion roof. Figures for the period April to September indicate that the park had less than 30 incidents reported.

iv) Vandalism

Damage has been sustained to some of the young staked trees within the park. The former tennis pavilion has been damaged internally following forced entry. The timber post and rail fencing to the boundary with the golf course has sustained some damage.



v) Motor vehicles

A boulder has been positioned in the car park to restrict vehicle access down the ramp. A locked tubular barrier rail prevents unauthorised vehicle entry into the park on Sandcliffe Road. Previous problems associated with footballers parking in the park during match days appear to be now resolved.

vi) The park at night

The park does not have lighting the only illumination is provided by on-street lamp columns that shed over-spill along the periphery of the park on the Harrison Drive and Sandcliffe Road boundaries. Incident reporting suggests the main issue associated with youths causing annoyance occurs during the evening peaking during the school summer holiday period.

The park's car park suffers from fly tipping of waste material; this practice usually occurs during the hours of darkness.

Wirral Council neither encourages nor discourages the nighttime use of the park.

Incident reports compiled by Wirral Council's Community Patrol are made available to the Parks and Countryside Service and are provided to the Area Parks Manager; no assessment is currently made of this available data in order to establish the types and frequencies of incidents occurring.

Anecdotally it is assumed that the majority of incidents associated with youths causing annoyance and anti social behaviour take place between 18:00 hrs and 21:00 hrs during Fridays and Saturdays predominately in the spring and summer months

vii) Pathways, pedestrian routes

Generally in safe condition, however the gravel path extending across the mounds requires attention at the western end opposite the Harrison Drive entrance due to the steep gradient a degree of erosion has occurred. The gravel ramped access points from the car park also require remedial attention.

viii) Boundaries

1.8 Metre high steel security fencing extends along the frontage to the bowling greens. The timber post and rail fencing to the boundary with the golf course has missing rails. Chain-link fencing to the rear of the 5th Tee is hanging/missing in certain sections. The park's perimeter fencing is in good condition.

The ball retaining fencing to the tennis court situated adjacent to the bowling greens has been damaged undermining the security of the area.

There is no barrier rail in place to define the limit of the car park area at the top of the embankment.

ix) Buildings

The former tennis pavilion has steel grills and vertical bar gates fitted however the building has sustained considerable internal damage the exterior presents a disused and neglected appearance.

The football pavilion is protected with steel security shutters however the exterior elevations have graffiti and attempted forced entry has occurred to the rear a steel storage container provides access to the buildings roof.

The two bowls huts are in good repair and secure and benefit from being within an enclosed area.



x) Children's play area

The children's play area is enclosed and has a self-closing gate and has both rubberised safety tiles and play grade bark chippings laid beneath the play equipment.

xi) Is the park well cared for?

The park is clean and well maintained, however graffiti is evident and also dog fouling. The steel storage container situated to the rear of the football pavilion appears to be unused and creates a poor impression.

An Annual Parks Safety Inspection Checklist was introduced in 2003 but is not currently in use, the inspection is intended to identify defects within the park that present a safety problem for staff, users and adjacent residents. The checklist requires appraisal of the following items:

1. Paths, steps, ramps
2. Walls, fences, gates
3. Buildings
4. Furniture – signs, seats, litterbins etc
5. Soft landscape – grass, planted areas, water features etc
6. Trees

3) Well maintained and clean

The children's play area is visited on a weekly basis (Mon. – Fri.). During these visits the Play Area Inspection team carry out safety checks and a record is filled in and retained on file in support of the inspection procedure. If possible the team will repair any defects noticed or take any action required to remove the item from use until a repair can be undertaken.

The Royal Society for Prevention of Accidents (RoSPA) undertakes an annual independent inspection of the park's play equipment.

The play area, by comparison with modern facilities, is now dated, the surfacing does not meet with current European standards and the play equipment lacks diversity of interest.

The 'Playing Pitch Assessment' (2004) reports that the overall pitch quality is acceptable.

Horticultural maintenance is carried out in accordance with a frequency based work programme allied to a specification. The work programme or "job card" is issued to staff on a quarterly basis; these are used for identifying all maintenance operations on the site for the period. Currently these documents are not being fully utilised and are under review.

The maintenance regime is carried out to meet general standards set out in a Borough-wide grounds maintenance 'frequency based' specification. The specification sets out corporate standards of maintenance.

The Senior Park Development Officer has carried out an assessment of the current maintenance condition of the park under the following 13 headings. The facilities and features are simply categorised as good, fair or poor and can only represent findings at the time of writing.

Grounds maintenance site checklist

Park	Harrison Park
Date	2006

Grass	Good	Fair	Poor
Fine Sport		√	
Playing Fields		√	
Ornamental		√	
General	√		
Rough			√
Wild Flower Area	N/A	N/A	N/A

Planting	Good	Fair	Poor
Annual			√
Herbaceous	N/A	N/A	N/A
Roses	N/A	N/A	N/A
Shrubs		√	
Hedges	N/A	N/A	N/A
Young staked trees / semi-mature trees			√
Mature Trees		√	
Woodland	N/A	N/A	N/A
Hard Surfaces	Good	Fair	Poor
Tarmac Sport	√		
Hard Porous	N/A	N/A	N/A
Footpaths			√
Drives	N/A	N/A	N/A
Car Parks		√	
ACW / ATP	N/A	N/A	N/A
Steps	N/A	N/A	N/A

Play Areas	Good	Fair	Poor
Maintenance		√	

Litter	Good	Fair	Poor
Collection		√	
Bins	√		

Buildings	Good	Fair	Poor
Repair / Maintenance		√	
Graffiti			√

Fencing	Good	Fair	Poor
Repair / Maintenance		√	

Walling	Good	Fair	Poor
Maintenance	N/A	N/A	N/A
Graffiti	N/A	N/A	N/A

Drainage	Good	Fair	Poor
Ditches	N/A	N/A	N/A
Inspection Chambers / Covers	N/A	N/A	N/A
Gully pots	N/A	N/A	N/A

Signage	Good	Fair	Poor
Repair / Maintenance			√
Graffiti			√

Furniture / Memorials	Good	Fair	Poor
Repair / Maintenance		√	
Graffiti	√		

Lighting	Good	Fair	Poor
Maintenance	N/A	N/A	N/A

Water	Good	Fair	Poor
Maintenance	N/A	N/A	N/A
Safety	N/A	N/A	N/A

It is apparent that operational factors extending beyond the influence of this management plan require consideration in order to improve the overall standard of grounds maintenance. The main issues for further consideration should include staff management (i.e. motivation, supervision and training) coupled with resourcing (i.e. revenue funding, machinery and materials).

Principal Officer Parks Management/LF to analyse findings and report

The two football pitches receive limited surface management during the playing season. One of the pitches is surrounded by a white tubular barrier rail fence. Reinstatement of the main areas of wear on the playing surfaces is undertaken at the end of the playing season.

A number of the young Holm Oak trees (*Quercus Ilex*) have failed to establish and some trees are loose from their stakes.

A survey of the park's tree stock has not been undertaken.

Day to day repairs such as repairs to acts of vandalism, plumbing, electrical, roofing etc are reported by the Area Parks Managers to H.Q and are logged on computer database and issued to the appropriate 'in-house' trade.

Capital funded works; for example re-roofing, electrical re-fitting etc are submitted for consideration and inclusion on the PPM Programme, a

prioritised list of schemes is then compiled by the Corporate Services Department.

The timber post and rail fencing to the boundary with the golf course has missing horizontal cross rails



The three remaining tennis courts require surface improvement treatment the same as the other courts where the surface has been stabilised and repainted with fresh line markings. Ball court fencing surrounding the tennis courts on two sides now requires renewal.

Chain Link fencing surrounding the golf tee of the adjacent course was hanging loose and had partially collapsed in places.



The litterbins in some instances are not of a compatible style with the park's seating.



Four of the seven tennis courts have been treated with a coloured resin binder and the courts re-marked, however the Bitumen Macadam surfacing is displaying cracks and consideration will need to be given to resurfacing the courts, at which time the level of usage for tennis should be assessed to ensure the demand still exists for the provision of six courts. Maximum usage would appear to coincide with the Wimbledon Tennis Championship, with usage outside of this period somewhat limited. An alternative future use for part of this area may need to be considered.

The security fencing adjacent to the railway line evident from the car park area presents a rather industrial appearance.



The Children's play area - equipment lacks interest and the surfacing does not meet with current European standards regarding safety.

The bound gravel footpath, which extends across the mounds has become eroded, the path opposite the Sandcliffe Road entrance, sheds gravel onto the adjacent Bitumen-Macadam surface and looks unsightly.



Seating in the park has not had hard surfacing laid beneath, which presents a poor appearance.

The border of annual bedding located in the bowls area is small and somewhat inconspicuous.

The condition of the footpath network should be appraised and a programme of annual resurfacing and patching should be introduced, as currently some areas of the Bit-Mac surfacing has become unbound and loose presenting a potential tripping hazard.

The steel vertical bar fencing within the park will require re-painting every five years, with a third completed each year with a two year gap as follows:

<u>Fence line</u>	<u>Length</u>	<u>Year</u>
Harrison Drive frontage	116 Lin m	06, 11, 16, 21
Sandcliffe Road frontage	162 Lin m	07, 12, 17, 22
Bowling Greens	143 Lin m	08, 13, 18, 23

The tubular barrier rail fence surrounding New Brighton FC's pitch is constructed from pre-cast holed concrete uprights and horizontal rails of scaffold poles clamped together. It is understood that the clubs West Cheshire Division two status requires the pitch to be enclosed, however pins and rope are deemed adequate in this circumstance. The barrier rail is not considered suitable for a public space, and raises concern from a Health and Safety perspective, responsibility in the event of an accident associated with the fencing requires clarification with New Brighton F.C.

4) Sustainability

Water and energy consumption at the park is monitored and where necessary modification is made to minimise wastage, thereby achieving economies in usage in line with the Authorities Environmental Policy.

Green waste generated at the Park is not currently composted and reused on the site; a bay for this purpose has been constructed within the bowls area.

An environmental audit of the park is to be undertaken, the scope of which is to identify the aspects and impacts arising from the management and operational activities of Harrison Park.

A bio-diversity action plan to increase the parks ecological interest will be produced.

Pesticide usage within the park is confined to the following items:

1. Round-up Bi-active – Weed control to fence lines and hard surfaced areas
2. Ring Master – Bowling greens maintenance
3. Cast Away Plus - “ “ “
4. Fungicide - “ “ “
5. Selective Herbicide – Bowling greens and football pitches

Control of Substances Hazardous to Health (C.O.S.H.H.) assessment records of all chemical based products used within the park form part of the Departments Quality Assurance procedures. Pesticide records are retained at the district depot (Central Park). Chemical storage and usage within the park complies with the requirements defined within the current pesticide handling legislation.

Compost with reduced peat content is used for the production of the Park's bedding plant requirement.

Tractor and mowing equipment utilised in the park are checked for emission levels.

Grass is left unmown across the dune mounding presenting a pleasing contrast to the close mowing of playing field. The longer grass length across the dune mounding provides diversity thereby increasing the park's habitat potential. Ragwort and Japanese Knotweed is however, beginning to establish within a small area of the dunes.' Blowholes' in the dunes are apparent in some areas and has lead to pockets of wind erosion.

All brash resulting from tree pruning is chipped and retained for use as mulch. The Park is situated in close proximity to public transport, Mersey Rail's Grove Road station is close by; a frequent bus service also has a stop located on Harrison Drive.

5) Conservation and Heritage

The relevant Parks Development Officer to report re maximising opportunities for the enhancement of the biodiversity potential of Harrison Park

The cast iron drinking fountain ornamental feature was restored as previously referred to; this included a new casting of a cherub blowing a horn, which was made to replace the original.



The Harrison Park Men's Bowling Club's have been established in the Park since 1909. The club lobbied for a number of years for funding to replace the dilapidated bowls pavilion eventually finding success in 2003 with the New Wallasey SRB fund.

The distinctive mounds, which give the Park character, are the remains of a larger coastal dune system, which existed up to the turn of the previous century.

6) Community Involvement

Following support from the Wallasey CBED Group, the Wallasey Village Community Partnership reformed the Friends of Harrison Park in June 2005. The Group hold meetings on a quarterly basis hosted in the Park's bowls pavilion.

The Friend's Group are intending to introduce an annual events programme that will include:

- A Wallasey Village Festival
- Church events
- Christmas activities

The Friends Constitution is defined as follows:

"The Friends of Harrison Park" is a Trust constituted with the aim of preserving and, where possible, improving the leisure and recreation facilities

of the Park as permitted within the parameters set by the Harrison family in their endowment to citizens of Wallasey and the regulations laid down by the management (Metropolitan Borough of Wirral)".

All of Wirral's 26 Park Friend's groups are invited to attend a Park's Forum, which is held twice a year, presenting an opportunity for the various groups to meet and share experience/network. Collectively the Friends of Wirral Parks produce a quarterly newsletter with contributions from all friends groups, for a copy contact 637 6218.

Five local football teams currently use the park's two football pitches

1. New Brighton F.C & New Brighton Juniors F.C
2. Rockville F.C
3. The Clarence F.C
4. Poulton Royal F.C
5. New Brighton Saints Junior F.C

The following four bowling clubs use the parks greens:

1. Harrison Park Bowling Club
2. Queens Liscard Bowling Club
3. Harrison Park Ladies Bowling Club
4. Parkfield Bowls Club

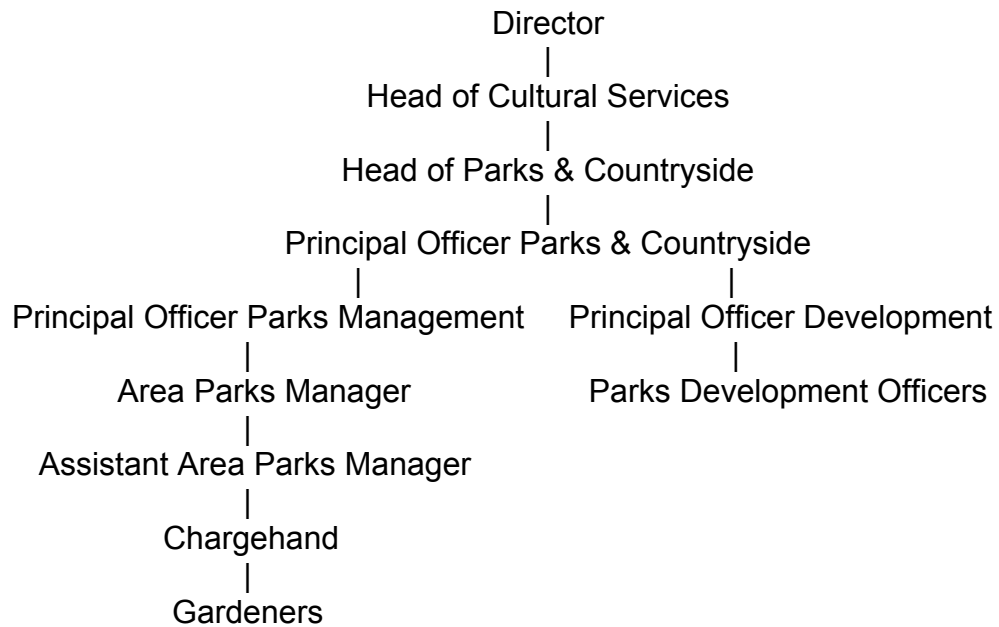
7) Marketing

The Park is not currently marketed.

Wirral Council's Internet web site does not feature any information concerning the park.

8) Management

Following re-organisation of The Parks & Countryside Service in 2004 the following management structure was put in place.



5) Aims and objectives

Aim: Our aim is to make the park more welcoming

Objectives:

- To improve the car park area
- Construct youth play facility – **Completed 2006**
- Paint the exterior of the football changing facility to obliterate graffiti and to deter further incidences
- Remove or enhance the steel storage container
- Remove poor quality signage and timber uprights from entrance points

Aim: To make the park Healthy, Safe and Secure

Objectives:

- Raise ongoing problems regarding anti-social behaviour via the Junior JAG
- Undertake annual 'Site Safety Inspection'
- To decrease the amount of dog fouling in the Park
- Improve the access ramp and fit hand rail
- To respond quickly to incidents of vandalism and graffiti
- To decrease the incidents of anti social behaviour occurring in the Park *See Security Audit*
- Consider future options regarding the former tennis pavilion
- Consider measures to counter the fly tipping occurring within the car park
- Erect security fencing to bowls
- Install trip rail fencing along the edge of the car park/top of embankment
- Initiate annual independent inspection of play equipment

Aim: To improve the park's maintenance standard

Objectives:

- **Principal Officer Parks Management to report**
- To achieve the standard as defined by the Green Flag Award scheme
- Replace failed trees
- Produce a tree management programme
- Repair/replace boundary fencing
- Replace the litter bins with Ollerton 'Festival' bins
- Remove border of annual bedding in the bowling green area
- Plant hedging
- Refurbish the children's play area
- Repair the gravel surface of the footpath on the dunes mounds
- Provide hard surfacing beneath the bench seating
- Re-paint steel boundary fencing every five years
- Re-surface tennis courts/appraise level of use of courts

- Replace chain link ball-court fencing
- In conjunction with NBFC establish the future maintenance of the tubular barrier rail to the football pitch

Aim: To improve environmental sustainability within the Park

Objectives:

- Improve waste management and composting
- Undertake an environmental audit
- Further reduce peat usage

Aim: To improve the conservation and heritage value of the park

Objectives:

- *The relevant Parks Development Officer to report*
- Repair erosion to dune mounds
- Control Invasive weed species

Aim: To increase the amount of community involvement in the Park

Objectives:

- Introduce an annual events programme

Aim: Improve the marketing of the Park

Objectives:

- Include the Park's details on the Wirral Council Internet web site

Aim: To manage the implementation and review of this plan

Objectives:

- To create mechanisms to actively review both maintenance and improvements

6) Action Plan and Security improvement Action Plan

	Action	Responsibility	When	Financial
1.To make the park more welcoming				
1.1	Undertake regular cutting of the embankments either side of the car park entrance, as per grass cutting frequency, and mow area adjacent to railway leaving swathes of uncut grass to provide diversity, interest and habitat	Area Parks Manager (APM)	Winter 2005/6	Within existing resources (WER)
1.2	Provide a youth orientated sports facility, multi-use games area (MUGA)	Big Lottery project Officer	June20 06	Big Lottery fund
1.3	Apply 'peat' coloured masonry paint to the exterior rear and side walls and storage cylinder on roof of football changing facility. Paint-out graffiti on front shutters with grey under coat	APM		
1.4	Discuss the removal or enhancement of the steel storage container with New Brighton F.C	APM/NBFC		
1.5	Remove poor quality signage and supports from entrance points	APM		WER
2. To make the park, healthy, safe and secure				
2.1	Raise problems regarding ongoing security issues via the Junior JAG	APM		
2.2	Undertake annual 'Site Safety Inspection'	APM		WER
2.3	Raise awareness of the issue of dog fouling, staff to hand out leaflets to dog walkers. Replace 'Clean it up' signs as soon as they are defaced, regularly re-stencil signs onto footpath surface.	Area Parks Manager	2007	
2.4	Resurface access ramp from car park with Bitumen Macadam and provide hand rail			Requires additional funding (RAF) £5K

2.5	Respond in a reasonable time to all incidents of vandalism, paint-out or arrange removal of all graffiti.	APM		WER
2.6	Consider options for the former tennis pavilion	Park Development Officer (PDO)/APM		RAF £20K
2.7	Erect 39m of security fencing to match existing between bowls and tennis courts	Area Parks Manager		RAF £4K
2.8	Install knee rail in car park at the top of the embankment	Area Parks Manager		RAF £5K
2.9	Initiate annual ROSPA safety inspection of play equipment	'South' Area Parks Manager		WER
3. To improve the park's maintenance standard				
3.1	<i>Principal Officer Parks Management/LF to report</i>			
3.2	Achieve the Green Flag award	PDO/APM		RAF £5K pa
3.3	Improve Football pitch management regime to include regular aeration and surface rolling, assess nutrient requirement and adjust as necessary. Verti-drain pitches at end of season	APM	3 year prog. At £7,000 per annum	RAF £21K
3.4	Identify all failed young staked trees and carryout winter replacement planting	APM		RAF £2K
3.5	Assess the Park's tree stock and produce tree management programme	APM		WER
3.6	Replace all missing horizontal rails to timber fence between the Park and the golf course. Replace chain link fencing to 5 th tee	APM		RAF £5K
3.7	Replace all Wybone type litter bins with Ollerton 'Festival' pattern bins	APM		£5,000
3.8	Remove border of annual bedding in the bowls area and soil and seed to	APM		WER

	reinstate ground			
3.9	Assess condition of footpath surfacing throughout the park and programme for repair	APM	5% of 3,600m2 p.a	RAF £10K over 5 years
3.10	Re-paint steel fencing approx third a year	APM		WER
3.11	Plant mixed species hedging along the length of the security fencing to the railway line approx 165m to both soften the appearance and to increase habitat	APM		RAF £2K
3.12	Upgrade children's play area to include provision of new play equipment and improved safety surfacing	PDO/APM (south)/ Landscape Team (LT)		RAF £60K
3.13	Install timber edging restraints to footpath on mound to prevent gravel shedding onto the lower footpath	APM		WER
3.14	Provide hard surfacing beneath all bench seats to improve appearance	APM		RAF £2K
3.15	Colour spray and remark tennis courts/assess level of demand for tennis	APM		RAF £3.5K
3.16	Establish maintenance responsibility of the tubular barrier rail to the football pitch with NBFC consider removal or refurbishment	APM/NBFC		NBFC
4. Improve environmental sustainability in the park				
4.1	Compost all green waste for reuse at the park	APM		RAF £5K
4.2	Carryout environmental Management System Audit of the park and implement findings	Partners		WER
5. To improve the conservation and heritage value of the park				
5.1	<i>The relevant Parks Development Officer to report</i>			
5.2	Soil and re-seed all areas of erosion on dune mounds	APM		WER
5.3	Undertake control measures of invasive weed species	APM	Repeat treatment	WER

	such as Ragwort and Japanese knotweed		over 3 years	
6. To increase the community involvement in the park				
6.1	Facilitate and assist the Friends to organise community events within the park	PDO/APM		May require additional funding
7. Improve the marketing of the park				
7.1	Improve the Wirral Council Internet web site to include information on the park	Parks Officer		WER
8. To manage the implementation and review if this plan				
8.1	Introduce system to monitor and review progress of this plan	APM		WER

The costs quoted against the above actions are estimated figures only and will require to be updated at the implementation stage. It will be necessary to source capital funding in order to enable the works to progress.

Security Improvement Action Plan

	Action	Responsibility	When	Financial
1	Replace all damaged and defaced 'no golf' signs			
2	Establish a rapid response to incidents of graffiti and vandalism			
3	Paint-out to obliterate all graffiti evident to buildings, seating, bins, play equipment etc			
4	Remove steel storage container			
5	Erect 1.8m Steel vertical bar fencing between the bowls area and the tennis courts			
6	Repair chain link fencing and timber post and rail fencing to the boundary of the golf course			
7	Paint side and rear elevations of the football changing 'peat' colour			
8	Demolish former tennis pavilion and erect 1.8m security fence to the rear boundary of the building			
9	Consider and implement measures in conjunction with Technical Services Department to stop the fly tipping of waste material within the park's car park area			
10	Ensure all incidents of anti social			

	behaviour are reported to Merseyside Police			
11	Monitor all incident reports to ensure an adequate level of response			

7) Monitoring and Review

There will be a precise and clear process for monitoring both maintenance and development.

The Principal Officer for Parks Management will incorporate progress on Management Plan actions into the monthly management team meetings.

Charge hands will report back on progress or shortfalls to the Area Parks Manager after each visit.

The Area Parks Manager will carryout random inspections of the site between programmed monitoring visits.

The Area Parks Manager will carryout a quarterly inspection of the site with the relevant gardeners to assess maintenance standards and check against the issued work programme and specification.

The Parks Development Officer will carryout a bi-annual site visit with the Area Parks Manager and Friends representatives to oversee the delivery of the Management Plan. The target dates in the five-year action plan will enable people to see how the partnership is making progress and when that action has been achieved.

8) Appendix

1. Aerial photograph

